

ALASKA DIVISION OF HOMELAND SECURITY & EMERGENCY MANAGEMENT



Daily Situation Report 26-034 • February 3, 2026

Toll-Free 1.800.478.2337

Anchorage Area 907.428.7000

SEOC 907.428.7100

<u>SEOC Preparedness Level</u> Level 1-Routine Operations	http://ready.alaska.gov	<u>Alaska Military Installation Force Protection Level:</u> FPCON Bravo
<u>NTAS Bulletin</u> There are no current advisories https://www.dhs.gov/national- terrorism-advisory-system	<u>Maritime Security (MARSEC)</u> Level:1 Minimum Appropriate Security Measures	

(Significant changes from previous situation reports are red.)

Significant Issues:

NONE

2025 October West Coast Storm Disaster:

- 92 households/287 individuals transitioned from non-congregate shelters (hotels) to longer-term housing (apartments)
- In Non-Congregate Shelter (hotels) Individuals: 401, Households: 99

Division of Homeland Security and Emergency Management Public Information:

For current press releases, see: <https://ready.alaska.gov/PublicInformation/PressReleases>

Department of Health (DOH):

For current information, see: <https://health.alaska.gov/en/>

Travel Alerts and Conditions:

For current driving conditions, dial 511 or visit: <https://511.alaska.gov/>

Barry Arm Landslide / Tsunami Risk:

The Barry Arm landslide currently shows no signs of large-scale active deformation but smaller-scale instabilities on the surface of the landslide still pose a threat of localized tsunami generation in Barry Arm. Mariners transiting near Barry Arm should remain vigilant.

For the latest information on the Barry Arm Landslide and Tsunami risk, click here:

<https://dqgs.alaska.gov/hazards/barry-arm-landslide.html>

Earthquakes:

United States Geological Service (USGS) Earthquake Information:

[Earthquake Hazards Program | U.S. Geological Survey](#)

National Tsunami Warning Center: <https://tsunami.gov/>

Alaska Volcanoes:

Great Sitkin: Alert Level: Watch and Aviation Color Code: Orange

Shishaldin: Alert Level: Advisory and Aviation Color Code: Yellow

For Alaska Volcano updates, go to: <https://www.avo.alaska.edu/>

Air Quality Index (AQI) Advisories:

For the most up-to-date Air Quality Index Advisories:

<https://dec.alaska.gov/Applications/Air/airtoolsweb/Advisories>

Spills of Oil and Hazardous Substances:

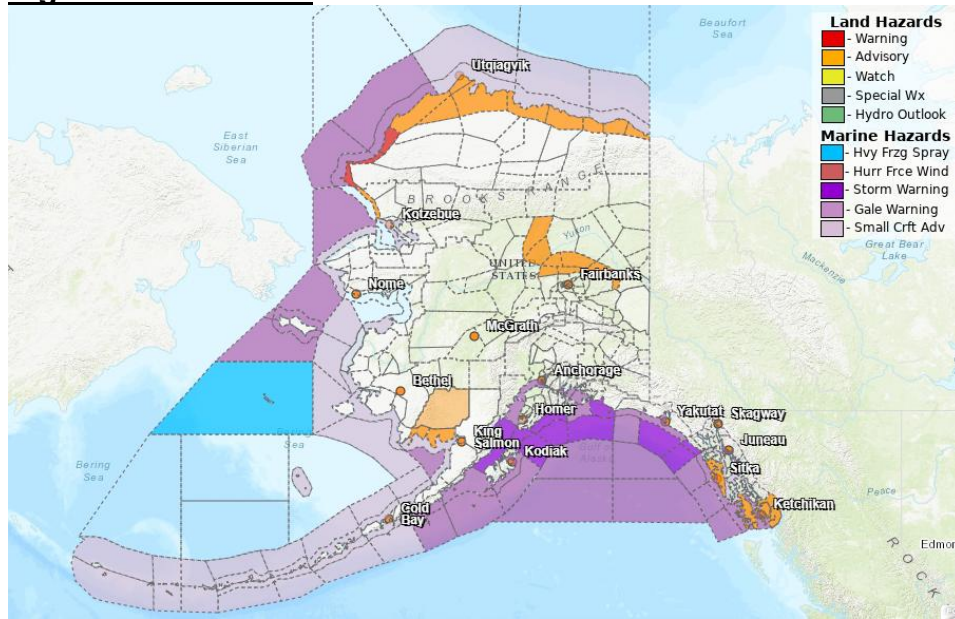
The Alaska Division of Environmental Conservation (ADEC) Spill Prevention and Response page is located at: <https://dec.alaska.gov/spar/ppr/spill-information/response/>

Alaska Cyber Security Information:

State Employees may sign up for cybersecurity notifications and alerts at:

<https://oit-int.alaska.gov/security/>

Significant Weather:



WARNINGS:

Blizzard Warning remains in effect for Western Arctic Coast until 3 PM AKST Wednesday.

ADVISORIES:

Wind Advisory remains in effect for City and Borough of Sitka until noon AKST today.

Prince of Wales Island until noon AKST today.

Ketchikan Gateway Borough and Annette Island until 6 PM AKST this evening.

Winter Weather Advisory is now in effect for Northern Bristol Bay Coast and Inland Bristol Bay from 9 AM to 9 PM AKST today.

Highway, Elliott Highway, and Steese Highway summits from 9 AM Tuesday to 3 AM AKST Thursday.

Northwest Arctic Coast, Northern Arctic Coast, Central Beaufort Sea Coast, and Eastern Beaufort Sea Coast until 3 PM AKST Wednesday.

Winter Weather Advisory for Kivalina and Red Dog Dock has been cancelled.

ALERTS:

Special Weather Statement remains in effect for unseasonably warm conditions bringing periods of moderate to heavy rain across Southeast Alaska, including Prince of Wales Island, Ketchikan Gateway Borough, and Annette Island.

For more information, go to <https://www.weather.gov/arh>

Avalanche Conditions:



Hatcher Pass – Low below 3500'; Moderate above 3,500'

Chugach State Park – Dangerous avalanche conditions exist, travel in avalanche terrain is not recommended.

Turnagain Pass and Girdwood – Considerable below 2500' High above 2500'

Summit Lake – Considerable below 2500' High above 2500'

Seward and Lost Lake – Considerable below 2500' High above 2500'

Maritime; Intermountain; Continental – Moderate above 3000' Considerable below 3000'

Haines – Wind slabs may be present, deeper weak layers remain a concern.

For more information and the most current avalanche conditions, go to <https://alaskasnow.org>

The Next Situation Report will be on **February 4, 2026**. A significant change in situation or threat level will prompt an interim report. This report is posted on the internet at <https://ready.alaska.gov/sitrep>.

To register for email distribution, go to: <http://list.state.ak.us/mailman/listinfo/dhsem.situation.report>. Direct questions regarding this report to the SEOC at 907-428-7100 or seoc@alaska.gov